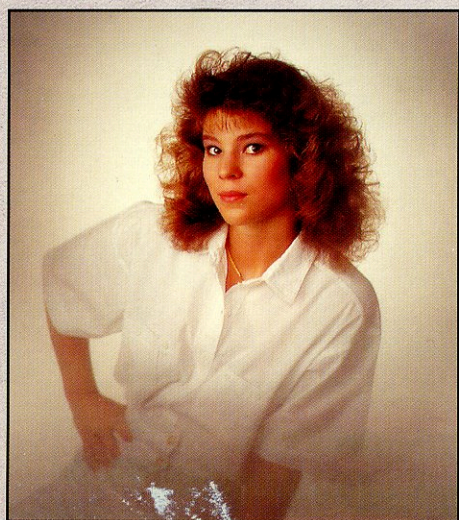


# *sailwind* Vignetter Kits



## *sailwind* /Leon LHN Vignetter Kit

The Sailwind/Leon High Net Vignetter Kit has three oval-shaped white mesh, magnetized vignettes for neutral or high key vignetting around the entire subject area. Recommended for use with lighter backgrounds.



© Color Graphix Studio

## *sailwind* Soft Frost Vignetter Kit

The Sailwind Soft Frost Vignetter Kit is a collection of eight over-sized, magnetized vignettes - four vignettes which give you a soft, light blending effect and four vignettes that give you a more pronounced frosted, light blending (high key) effect. Each type (soft, frost) comes with two different sizes of oval and circle center openings.



© Romaguera Photography

## *sailwind* /Leon LHK Vignetter Kit

This original High Key Vignetter Kit includes seven translucent vignettes (scoops, half-vignettes, curves), which are magnetized, for high-key vignetting.



© Leon Studio

For your nearest Sailwind distributor, contact: Sailwind Photo Systems • P.O. Box 9426 • Charlotte, NC 28299-9426 USA



# *Sailwind photo systems*

1809 Commonwealth Avenue • Post Office Box 9426  
Charlotte, North Carolina 28299-9426 • (704) 375-8453  
Fax (704) 376-1826

## **Leon Portrait Scoop Set**

The Sailwind/Leon Portrait Scoop Set consists of three black scoops in three densities: 4 ply, 5 ply, and 6 ply.

We suggest running a series of tests with either black and white or Polaroid film using an ASA approximately the speed of color film you normally use to determine the amount of vignetting you prefer.

The Sailwind/Leon Portrait Scoops are magnetized for easy use with your Sailwind Pro Vignetta Matte Bellows. While familiarizing yourself with the use of the Portrait Scoop vignettters, be sure to line up the vignettters with the front of your Sailwind Bellows for proper positioning. The magnetized vignettters will provide easy movement of the vignetting up or down slightly to achieve the desired effect. You have unlimited control and variations by positioning the vignettters from your lens with the rack-and-pinion rail on your Sailwind Bellows unit.

The Sailwind/Leon Portrait Scoops are designed to give the lower edges of the photograph a gentle blend rather than the dark "cut-off" results of some vignettters. If you should experience any flare in the harsh, direct rays of the sun, the Sailwind Pro Vignetta Matte Auxiliary Bellows will shade the vignetter to eliminate flare in the photograph.

If you are getting too much vignetting, either "open up" or increase aperture and/or position the vignetter closer to the lens to diminish the darkening effect.

When using lenses of focal lengths shorter than 127mm at smaller apertures, such as f/8, f/11, f/16, etc., regardless of format, be careful to move the vignetter closer to the lens to avoid the screening pattern being in focus and, therefore, projecting a pattern on the negative. Always preview your vignetting by stopping down the lens and viewing the image on your ground glass.



# *Sailwind photo systems*

1809 Commonwealth Avenue • Post Office Box 9426  
Charlotte, North Carolina 28299-9426 • (704) 375-8453  
Fax (704) 376-1826

## **The Leon Vignetter Kit**

The Leon Vignetter Kit consists of eight plastic slip-in vignettters.

The four brown vignettters gently blend background colors and "warm up" the cool color of outdoor light.

The four translucent vignettters are for high-key photography and need to be lighted independently with a small low-output strobe with slave or a Morris Mini Slave.

We suggest running a series of tests with conventional or Polaroid film using an ASA approximately the speed of color film you normally use to determine the amount of vignetting you prefer. Tastes vary with different photographers. You will need to take into consideration that different f-stops will render different effects. The wider f-stops blend the vignetting effect more than smaller f-stops. Vignettters are designed to work best with longer than normal focal length lenses.

When using the Leon Vignetter Kit with the Sailwind Pro Vignetta Matte Bellows, the vignettters slip easily into the slots on the front of the Sailwind Bellows. You have unlimited control by positioning your vignettters with the rack-and-pinion focusing rail. By viewing through the lens, you can actually see and control the vignetting effect. Should you experience any problems with the brown vignettters causing flare, the use of the Sailwind Pro Vignetta Matte Auxiliary Bellows to shade the vignetter will eliminate this problem.



Actual Photograph using:  
*Sailwind* Leon LVK Vignette  
©Color Graphix Studio



Actual Photograph using:  
*Sailwind* Leon LPS Vignette  
©Color Graphix Studio



# *sailwind* Vignetter Kits



## *sailwind* /Leon LPS Portrait Scoop Vignetter Kit

The Sailwind/Leon Portrait Scoop Vignetter Kit consists of three black mesh scoop vignettes which are magnetized. Each is a different density and are used for darkening the lower portion of the photograph.



© Color Graphix Studio



## *sailwind* /Leon LVK Vignetter Kit

The Sailwind/Leon Vignetter Kit has eight plastic slip-in vignettes. The four translucent vignettes are for high-key vignetting and the four brown vignettes are for low-key vignetting.

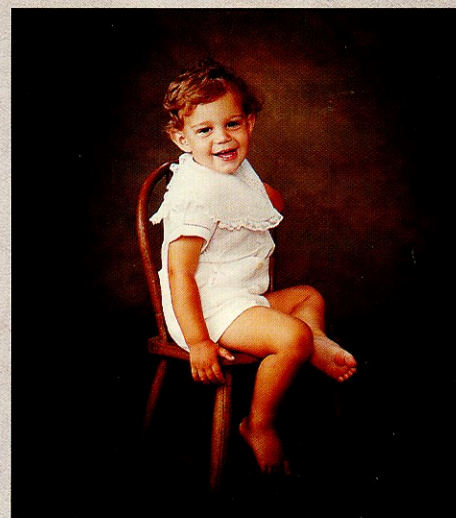


© Color Graphix Studio



## *sailwind* /Leon Pro II Vignetter Kit

The Sailwind/Leon Pro II Vignetting Kit is comprised of three oval-shaped black mesh vignettes magnetized for low-key vignetting (darkening) around the entire subject area.



© Leon Studio